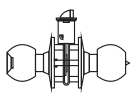


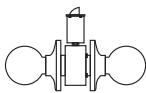


OKAYLOK[®]

PROFESSIONAL DOOR LOCK MANUFACTORY



TUBULAR KNOBSET



CYLINDRICAL KNOBSET



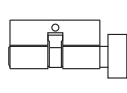
TUBULAR LEVERSET



CYLINDRICAL LEVERSET



DEADBOLT



CYLINDER



MORTISE LOCK

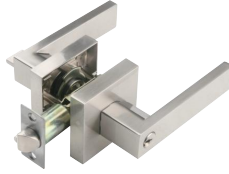
OKAY LOCK MANUFACTURE CO., LIMITED

OKAYLOK[®]
TUBULAR LEVER LOCK

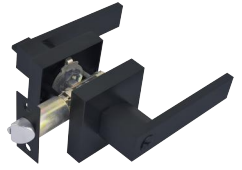
HEAVY DUTY TUBULAR LEVER LOCK

Specifications:

- Meet ANSI Grade 3 for over 200,000 life cycles
- Exposed Trim: Lever and Rosette are made of die-cast zinc alloy.
- Key: 5-Pins Kwikset/ Yale/ Schlage or computer keyways selectable.
- Latch 45°, Adjustable backset 60mm (2-3 / 8") or 70mm (2-3 / 4")
- Door Thickness: Fit doors from 35mm (1-3 / 8") to 50mm (2")
- Handing: Reversible lever for Right & Left Handed door
- Pack: Color Box or blister packing available



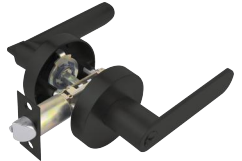
6271 SN



6271 BM



6211 SN



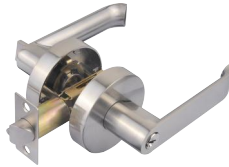
6211 BM



6251 AB



6241 SN



6231R SN



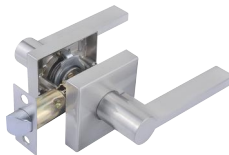
6231 SN



6272 SN



6273 SN



6213 SN



6232 SN



6233 SN



6223 SN



6381 SN



6371 SN

OKAYLOK®

CYLINDRICAL LEVER LOCK

TUBULAR LEVER LOCK

Specifications:

- Exposed Trim: Aluminium Lever, Rosette are made of stainless steel or steel, could be plated to match finishes indicated.
- Key: 5-Pins Kwikset/Yale/Schlage or computer keyways selectable.
- Cylinder: High class brass cylinder. (Solid brass 5 pins cylinder is available)
- Door Thickness: 1-3/8" to 1-3/4" (35mm to 45mm) standard.
- Backset: Adjustable 2-3/8" (60mm) or 2-3/4" (70mm) backset.



6491 SN



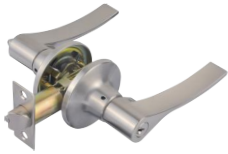
6411 SN



6461 SN



6481 SS



6431 SN



6541 SN



6361 SN



6491 BM



6661A



6561 SN



6391 SN



6521 SN

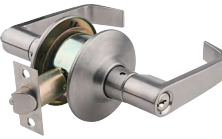
CYLINDRICAL LEVER LOCK



3411 SC



3461 SN



3481 SN



3491 SN

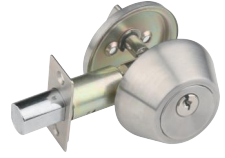
DEADBOLT & COMBO



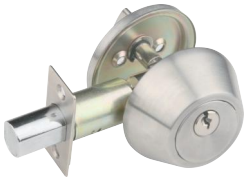
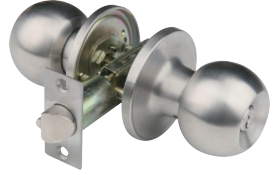
D401+6271 SN



D301+6211 SN



D101+6871 SS



D101 SS



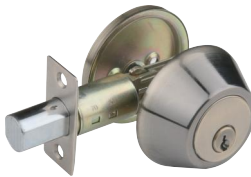
D102 SS



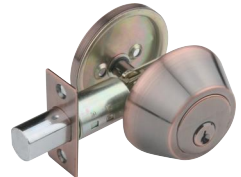
D101 BM



D101 PB



D101 AB



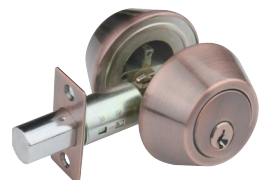
D101 AC



D102 PB



D102 AB



D102 AC



D301 SN



D401 SN



D502 BM



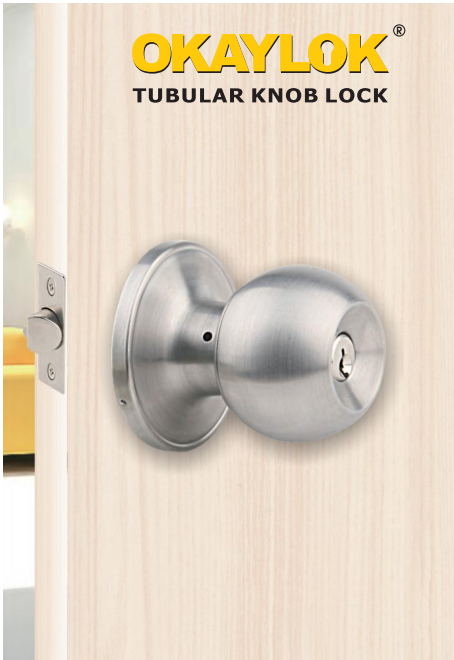
D302 SN



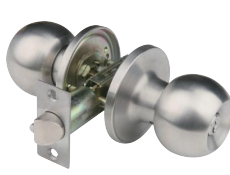
D402 SN



D502 SS



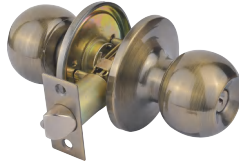
TUBULAR KNOB LOCK



6871 SS



6871 BM



6871 AB



6871 PB



6881 SS



6801 SS



6791 AB

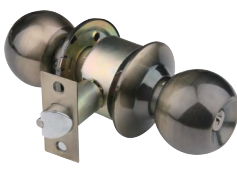


5601 PB

CYLINDRICAL KNOB LOCK



3871 SS



3871 AB



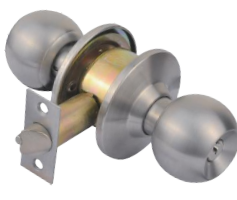
3871 AC



3871 PB



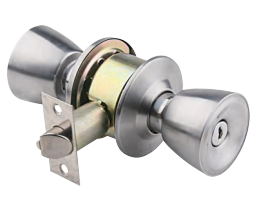
3871 BM



3871 SS-ML



3871F SS



3201 SS



5791 SS-L



3841 SS



3661 SS



3871 SS/LL
80mm Rose, 60mm Knob



EURO PROFILE CYLINDER



Single Cylinder



Double Cylinder



Privacy Cylinder



Half Cylinder

LOCK BODY



BACKSET

- 25x85mm
- 30x85mm
- 35x85mm
- 40x85mm
- 45x85mm
- 50x85mm
- 60x85mm

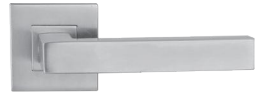
STAINLESS STEEL LEVER HANDLE



TH001



TH002



THS002



TH007



TH004



TH012

BARRA



661

SOBREPONER



715












806

GRIP HANDLESET

Specifications:

- CONSTRUCTION: Zinc Alloy
- BACKSET: 60mm-70mm Adjustable
- DOOR THICKNESS: 35-45mm
- CYLINDER: High class brass cylinder
(Solid brass cylinder is available)
- KEY: Kwikset 5 pins key way
(other key way is available)
- FINISH: PB/AB/AC/CP/SN/AN/
10B/PVD

FUNCTION

	SINGLE CYLINDER & SINGLE HANDLE TYPE A1 1		DOUBLE CYLINDERS & SINGLE HANDLE TYPE A2 2		SINGLE CYLINDER & DOUBLE HANDLES TYPE A3 3
	DOUBLE CYLINDERS & DOUBLE HANDLES TYPE A4 4		SINGLE CYLINDER & SINGLE HANDLE TYPE B1 5		SINGLE CYLINDER & DOUBLE HANDLES TYPE B2 6
	DOUBLE CYLINDERS & DOUBLE HANDLES TYPE B3 7		THREE CYLINDERS & DOUBLE HANDLES TYPE B4 8		DOUBLE DUMMY HANDLES TYPE D 9



8181 BM



8051 BM



8082 PB



8031 PB



8111 PB



8101 PB



8051 PB



8061 AC



8131 AB



8041 AB



8021 AB



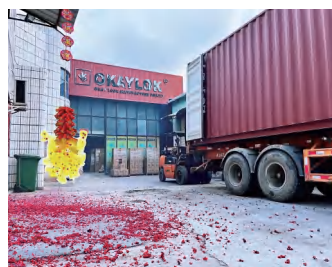
8001 AC



Okay Lock Manufacture Co.,Ltd. is located in the famous “China Hardware manufacture base” Xiaolan town, Zhongshan city, Guangdong province, China. We have 18 years of manufacturing experience. We specialize in produces various of door lock, including handleset, leverset, knobset, deadbolt, mortise lockset and some hardware.

"Quality first, Customer first" is always our company's core culture. Enthusiasm high efficient salesteam, forclientsto provide professional service, high technology research and development team is testing the products high quality guarantee. Reasonable Price, Trusty Quality and Best Service are our everlasting principle. All the products sales to America, Australia, Africa, Europe, Middle-east and Asian market.

We sincerely welcome friend from all over the world to start a friendly and win-win business relationship with us.



OKAY LOCK MANUFACTURE CO.,LIMITED

ADD: NO. 40 Qingfeng 6th Road, Xiaolan, Zhongshan, Guangdong, China.

Tel: 86-760-22256670

E-mail: okaylock@hotmail.com
okaylock8@hotmail.com

Website: www.okaylock.com