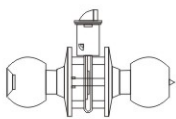


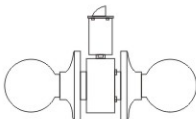


OKAYLOK[®]

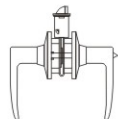
PROFESSIONAL DOOR LOCK MANUFACTORY



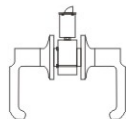
TUBULAR KNOBSET



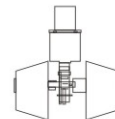
CYLINDRICAL KNOBSET



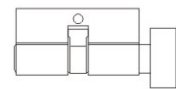
TUBULAR LEVERSET



CYLINDRICAL LEVERSET



DEADBOLT



CYLINDER



MORTISE LOCK

OKAY LOCK MANUFACTURE CO., LIMITED



Okay Lock Manufacture Co.,Ltd. is located in the famous “China Hardware manufacture base” Xiaolan town, Zhongshan city, Guangdong province, China. We have 12 years of manufacturing experience. We specialize in produces various of door lock, including handleset, leverset, knobset, deadbolt, mortise lockset and some hardware.

"Quality first, Customer first" is always our company's core culture. Enthusiasm high efficient sales team, for clients to provide professional service, high technology research and development team is testing the products high quality guarantee. Reasonable Price, Trusty Quality and Best Service are our everlasting principle. All the products sales to America, Australia, Africa, Europe, Middle-east and Asian market.

We sincerely welcome friend from all over the world to start a friendly and win-win business relationship with us.



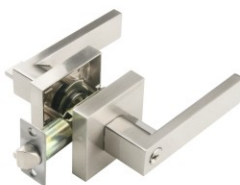


Contents

Heavy Duty Tubular Lever Lock.....	1--2
Tubular Lever Lock.....	3--5
Cylindrical Lever Lock.....	6--7
Tubular Knob Lock.....	8--10
Cylindrical Knob Lock.....	11--15
Deadbolt /Combo.....	16--18
Handle Lock.....	19--22
Grade 2 Commercial Lock.....	23
Mortise Cylinder / Lock body.....	24--26
Stainless steel lever handle & Plate.....	27--32
Rim Night Lock.....	33--35
Function and Finish	36



Handleset



Heavy Duty
Tubular Lever
Lockset



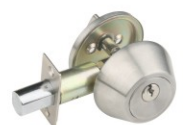
Tubular Lever
Lockset



Tubular Knob
Lockset



Cylindrical
Knob Lockset



Deadbolt

OKAYLOK[®]

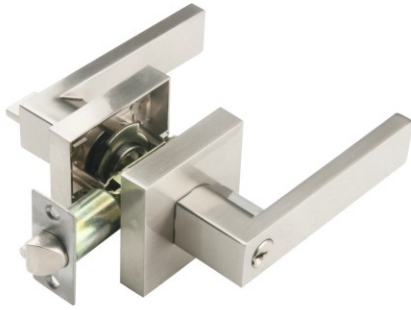
TUBULAR LEVER LOCK



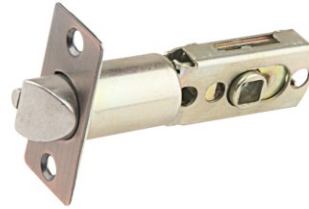
HEAVY DUTY TUBULAR LEVER LOCK

Specifications:

- Meet ANSI Grade 3 for over 200,000 life cycles
- Exposed Trim: Lever and Rosette are made of die-cast zinc alloy.
- Key: 5-Pins Kwikset/ Yale/ Schlage or computer keyways selectable.
- Latch 45°, Adjustable backset 60mm (2-3 / 8") or 70mm (2-3 / 4")
- Door Thickness: Fit doors from 35mm (1-3 / 8") to 50mm (2")
- Handing: Reversible lever for Right & Left Handed door
- Pack: Color Box or blister packing available



6271 SN



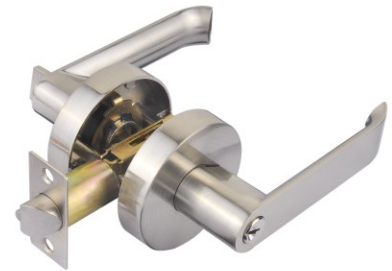
45° LATCH AS STANDARD



6211 SN



6231 SN



6231R SN



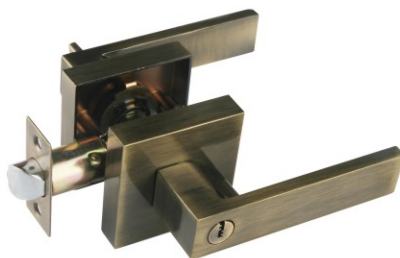
6251 AB



6241 SN



6281 SN



6271 AB



6221 AB



6261 AC

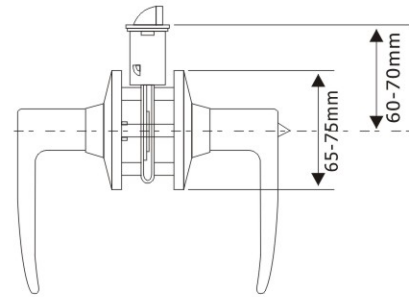
**TUBULAR
LEVER LOCK**

Specifications:

- Exposed Trim: Zinc alloy Lever, Rosette are made of brass or stainless steel or steel, could be plated to match finishes indicated.
- Key: 5-Pins Kwikset/Yale/Schlage or computer keyways selectable.
- Cylinder: High class brass cylinder. (Solid brass 5 pins cylinder is available)
- Door Thickness: 1-3/8" to 1-3/4" (35mm to 45mm) standard.
- Backset: Adjustable 2-3/8" (60mm) or 2-3/4" (70mm) backset.



6411 SN



6431 SN



6481 SS



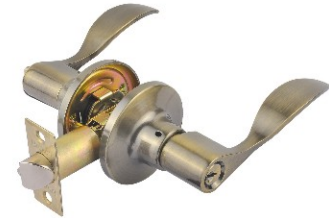
6461 SN



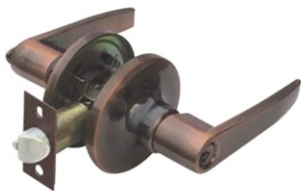
6413 SN



6481 AB



6461 AB



6411 AC-L



6511 AC



6501 AC



6391 SN



6301 SN



6571 SN

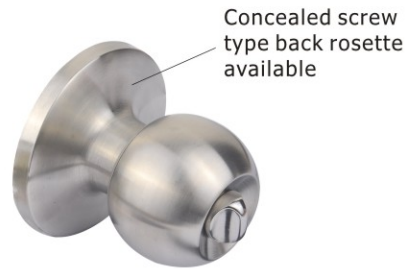
TUBULAR LEVER LOCK

Specifications:

- Exposed Trim: Zinc alloy Lever, Rosette are made of brass or stainless steel or steel, could be plated to match finishes indicated.
- Key: 5-Pins Kwikset/Yale/Schlage or computer keyways selectable.
- Cylinder: High class brass cylinder. (Solid brass 5 pins cylinder is available)
- Door Thickness: 1-3/8" to 1-3/4" (35mm to 45mm) standard.
- Backset: Adjustable 2-3/8" (60mm) or 2-3/4" (70mm) backset.



6491 SN



6361 SN



6521 SN



6541 SN



6561 SN



6441 SN



6401 SN



6451 PB



6471 SN



6421 AB



6581 SN



6531 SN



6551 AB

**ALUMINIUM
LEVER LOCK**

Specifications:

- Exposed Trim: Aluminium Lever, Rosette are made of stainless steel or steel, could be plated to match finishes indicated.
- Key: 5-Pins Kwikset/Yale/Schlage or computer keyways selectable.
- Cylinder: High class brass cylinder. (Solid brass 5 pins cylinder is available)
- Door Thickness: 1-3/8" to 1-3/4" (35mm to 45mm) standard.
- Backset: Adjustable 2-3/8" (60mm) or 2-3/4" (70mm) backset.



6491A



6411A



6561A
Satin Nickel Finish



6661A
Polish Aluminum Finish

OKAYLOK[®]

CYLINDRICAL LEVER LOCK



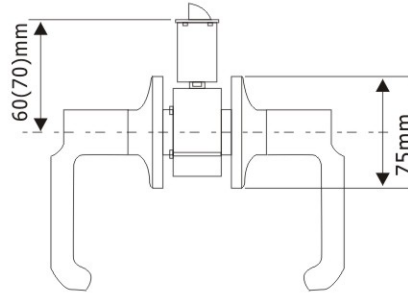
CYLINDRICAL LEVER LOCK

Specifications:

- Exposed Trim: Zinc alloy Lever, Rosette are made of brass or stainless steel or steel, could be plated to match finishes indicated.
- Key: 5-Pins Kwikset/Yale/Schlage or computer keyways selectable.
- Door Thickness: 1-3/8" to 1-3/4" (35mm to 45mm) standard.
- Backset: 2-3/8" (60mm) as standard and 2-3/4" (70mm) available.
- Fully reversible for left or right hand doors.
- Cylinder: High class brass cylinder (solid brass 5 pins cylinder is available)



3491 SN



3461 SN



3411 SC



3531 SN



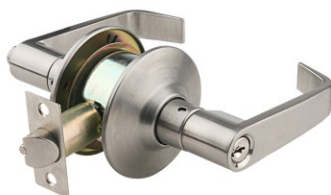
3461 AB



3411 AB



3531 AC



3481 SN



3481 AB



3561 PB

AB	AC	PB	SS	SN	SC	CP	US10B

OKAYLOK[®]

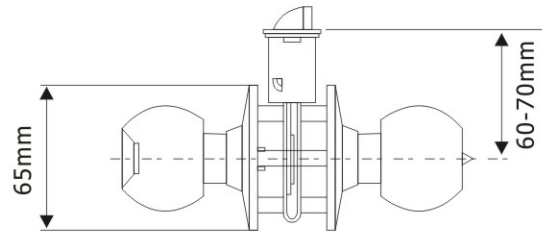
TUBULAR KNOB LOCK



**TUBULAR
KNOB LOCK**

Specifications:

- 5 Pins tumbler cylinder
- Adjustable backset latch bolts, 60mm or 70mm
- Fit doors 1-3/8" to 1-3/4" thick (standard). 1-1/2" to 2" thick (special)
- 2-1/4" (57mm) curved lip strike as standard.
- Fully reversible for left or right hand doors.



6871 SS



6871 AB



6871 AC



6871 PB



6881 SS



6801 SS



6821 SS



6711 AB



6711 PB



6811 PB



6301 PB



6791 AB

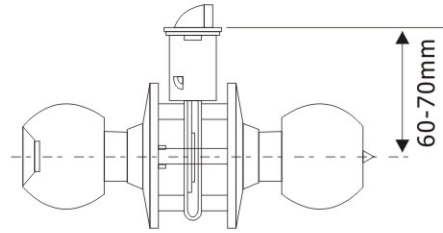


6791 SS

TUBULAR KNOB LOCK

Specifications:

- 5 Pins tumbler cylinder
- Adjustable backset latch bolts, 60mm or 70mm
- Fit doors 1-3/8" to 1-3/4" thick (standard). 1-1/2" to 2" thick (special)
- 2-1/4" (57mm) curved lip strike as standard.
- Fully reversible for left or right hand doors.



S6871SS

Square rosette 65mm, knob 58mm



5601 PB



5602 PB



5603 PB



5621 PB



5621 AB



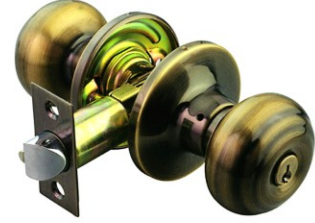
5631 AB



6351 SS



6351 AB



6341 AB



6381 10B



6383 10B



6391 10B

OKAYLOK[®]

CYLINDRICAL KNOB LOCK



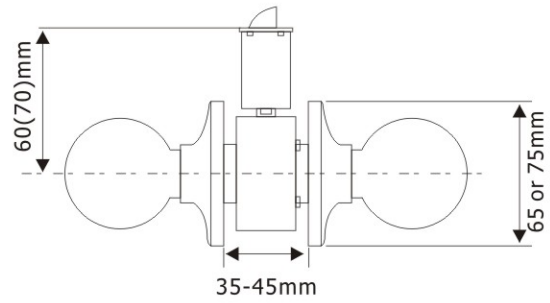
CYLINDRICAL KNOB LOCK

Specifications:

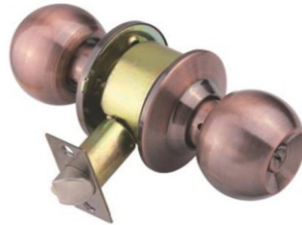
- 5 Pins tumbler cylinder
- Door Thickness: 1-3/8" to 1-3/4" (35mm to 45mm) standard.
- Backset latch: 2-3/8" (60mm) latch as standard.
2-3/4" (70mm) available.
- Fully reversible for left or right hand doors.



3871 SS



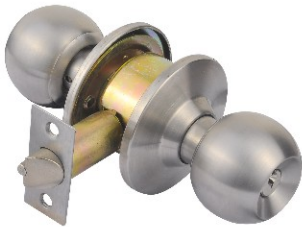
3871 AB



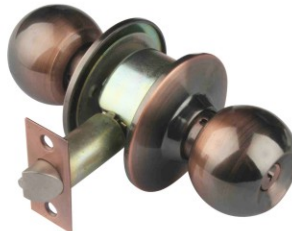
3871 AC



3871 PB



3871 SS-ML



3871 AC-L



3871 AC-LL



3871 SS/WF



3871F SS



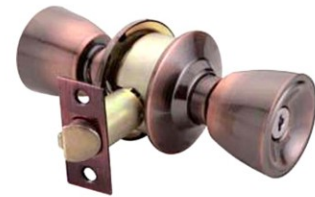
3871 SS/LL
80mm Rose, 60mm Knob



3201 SS



3201 AB



3201 AC

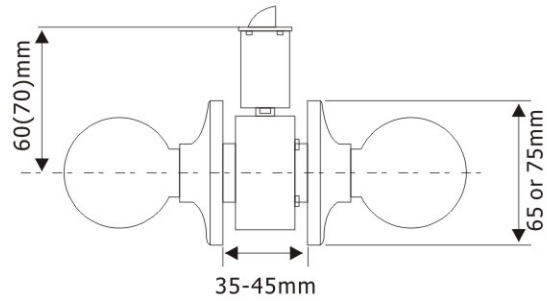
**CYLINDRICAL
KNOB LOCK**

Specifications:

- 5 Pins tumbler cylinder
- Door Thickness: 1-3/8" to 1-3/4" (35mm to 45mm) standard.
- Backset latch: 2-3/8" (60mm) latch as standard.
2-3/4" (70mm) available.
- Fully reversible for left or right hand doors.



5791 SS-L



5791 AB-L



3651 SS/SP



5791 SS/HL



3661 SS



3841 SS



3881 SS



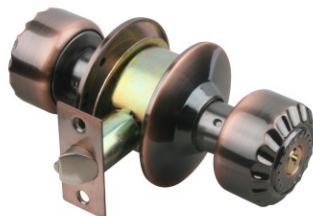
3801 SS



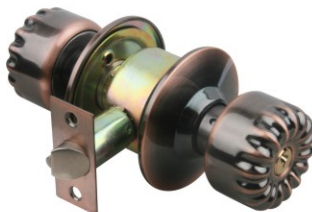
3941 AC



3951 AC



3851 AC-L



3861 AC-L



3661 SP/HL

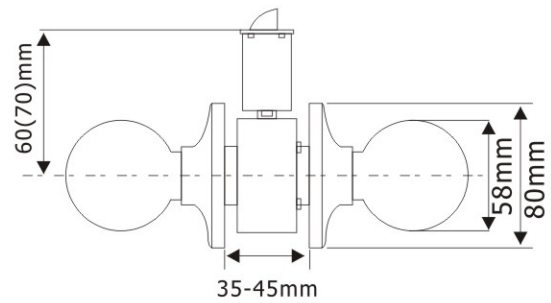
CYLINDRICAL KNOB LOCK

Specifications:

- 5 Pins tumbler cylinder
- Door Thickness: 1-3/8" to 1-3/4" (35mm to 45mm) standard.
- Backset latch: 2-3/8" (60mm) latch as standard.
2-3/4" (70mm) available.
- Fully reversible for left or right hand doors.



3681 PB/W3



3681 PB/W3



3681 PB/W5



3681 SS/W2



3681 SS/W3



3681 AC/W5



3871 SS/SP/W5



3631 SN/PB/W3



3631 AC/PB/W3



3631 SS/PB



3611 SS/SP



3621 AC/PB



3621 AB/PB

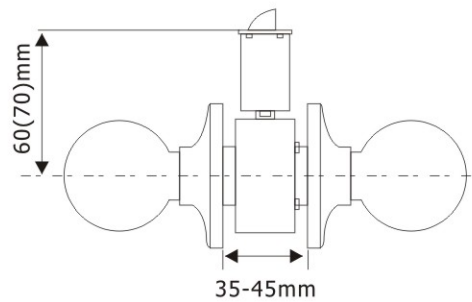
**CYLINDRICAL
KNOB LOCK**

Specifications:

- 5 Pins tumbler cylinder
- Door Thickness: 1-3/8" to 1-3/4" (35mm to 45mm) standard.
- Backset latch: 2-3/8" (60mm) latch as standard.
2-3/4" (70mm) available.
- Fully reversible for left or right hand doors.



3331 PB/SN



3381 AB



3311 SN/CP



3321 PB/SN



3371 SN/CP



3961 AC



3391 AC



3911 SN/CP



3351 PB/SN



3971 SN/CP



3921 AB



3901 AC



3361 PB/BN

OKAYLOK[®]

DEADBOLT LOCK



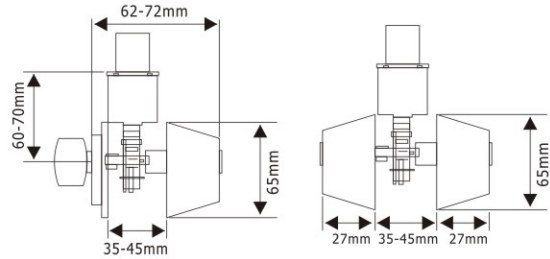
DEADBOLT LOCK

Specifications:

- Exposed Trim: Products are stainless steel or brass based to match finishes indicated.
- Keying: 5-pins tumbler KW 1 keyway with brass keys.
- Various keyways selectable.
- Door thickness: 1-3/8" to 1-3/4" (35mm to 45mm) standard.
- Backset: Adjustable 2-3/8" (60mm) or 2-3/4" (70mm) backset.
- Function: Single or double cylinder.
- Cylinder: High class brass cylinder (Solid brass 5 pins or 6 pins cylinder is available)



D101 SS



D101 PB



D101 AB



D101 AC



D102 PB



D102 AB



D102 AC



D102 SS



D102 SP



D202 AB



D108 SS



D107 SS



D109 SS

DEADBOLT LOCK & COMBO LOCK

Specifications:

- Exposed Trim: Products are stainless steel or brass based to match finishes indicated.
- Keying: 5-pins tumbler KW 1 keyway with brass keys.
- Various keyways selectable.
- Door thickness: 1-3/8" to 1-3/4" (35mm to 45mm) standard.
- Backset: Adjustable 2-3/8" (60mm) or 2-3/4" (70mm) backset.
- Function: Single or double cylinder.
- Cylinder: High class brass cylinder (Solid brass 5 pins or 6 pins cylinder is available), Combo Lock Key Alike.



D401+6271 SN



D301+6211 SN



D102+5601 PB



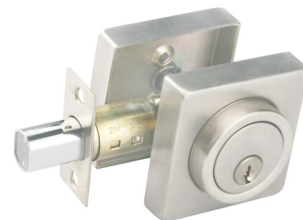
D101+6871 SS



D301 SN



D401 SN



D501 SS



D302 SN



D402 SN



D502 SS

OKAYLOK[®]

ZINC ALLOY HANDLE LOCK



BRASS HANDLE LOCK



9001 CP



LC07

Specifications:

- CONSTRUCTION: Solid Forged Brass
- BACKSET: 63.5mm, 70.2mm
- DOOR THICKNESS: 40-50mm
- LOCK BODY: Multifunctional American Style Lock body
- CYLINDER: Solid brass cylinder
- KEY: 1 Construction key & 5 host keys
- FINISH: PB/AB/AC/CP/SN/AN/10B/PVD

OKAYLOK®



9002 PB



9003



9004 AB



9005 PB



9006



8111 AB



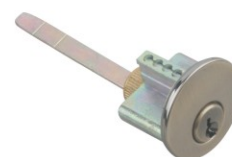
8181 SN



8101 PB



Solid brass cylinder available



Brass cylinder with zinc alloy housing as standard

ZINC ALLOY HANDLE LOCK



8031 PB



DL01



DL02



DL03

Specifications:

- CONSTRUCTION: Zinc Alloy
- BACKSET: 60mm-70mm Adjustable
- DOOR THICKNESS: 35-45mm
- CYLINDER: High class brass cylinder (Solid brass cylinder is available)
- KEY: Kwikset 5 pins key way (other key way is available)
- FINISH: PB/AB/AC/CP/SN/AN/10B/PVD



8231



8221



8211 PB



8201 PB



8083 BN SB



8093AC



8082 PB












8111 PB

ZINC ALLOY HANDLE LOCK



8051 PB

FUNCTION

	SINGLE CYLINDER & SINGLE HANDLE TYPE A1 1		DOUBLE CYLINDERS & SINGLE HANDLE TYPE A2 2		SINGLE CYLINDER & DOUBLE HANDLES TYPE A3 3
	DOUBLE CYLINDERS & DOUBLE HANDLES TYPE A4 4		SINGLE CYLINDER & SINGLE HANDLE TYPE B1 5		SINGLE CYLINDER & DOUBLE HANDLES TYPE B2 6
	DOUBLE CYLINDERS & DOUBLE HANDLES TYPE B3 7		THREE CYLINDERS & DOUBLE HANDLES TYPE B4 8		DOUBLE DUMMY HANDLES TYPE D 9



8061 AC



8131 AB



8041 AB



8021 AB



8001 AC



8121 AB



8091 AB



8071 AC



8081 SN



7320

HEAVY-DUTY COMMERCIAL LOCKS



5831 (G2)



5821 (G2)



5811 (G2)



Grade 2 Cylindrical Locksets

· Cylindrical locksets have a wide range of functions which make it an ideal product for applications such as medium grade commercial office and school or heavy duty residential projects.

- Pass ANSI/BHMA A156.2-2003 Grade 2 test
- UL 3 hours fire test certified
- Lifetime over 400,000 cycles
- 60mm or 70mm anti-fire latch optional, suit 35-45mm thick door
- perfect mechanism provides trusty security protection, various places suitable

Cylinder and Keys:

- Solid brass 6-pin tumbler cylinder with 2 nickel plated brass keys.

Latch:

- Deadlocking bolt with 1/2" throw for keyed functions.
- Stainless steel latch tongue.

Door Thickness:

- Adjustable for wood or metal doors from 1-3/8" to 1-3/4" (35mm to 45mm) thick

Backset:

- 2-3/4" (70mm) standard. 2-3/8" (60mm) available upon request.

Handing:

- Fully reversible for left and right hand door.



3871 (G2) SS

EURO PROFILE CYLINDER



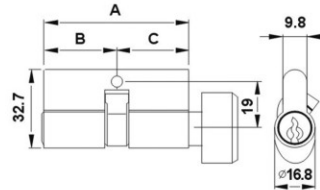
Single Cylinder



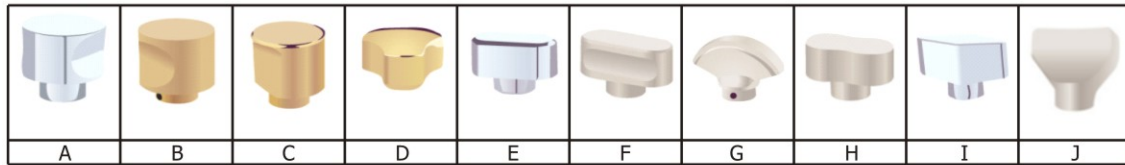
Double Cylinder



Privacy Cylinder



Turn Knob Available



Double Cylinder			
Dimension(mm)			Art No.
A	B	C	
50	25	25	CD50
60	30	30	CD60
65	32.5	32.5	CD65
70	36	36	CD70
76	38	38	CD76
80	40	40	CD80
90	45	45	CD90
100	50	50	CD100
110	55	55	CD110
120	60	60	CD120
130	65	65	CD130

Single Cylinder			
Dimension(mm)			Art No.
A	B	C	
50	25	25	CS50
60	30	30	CS60
65	32.5	32.5	CS65
70	36	36	CS70
76	38	38	CS76
80	40	40	CS80
90	45	45	CS90
100	50	50	CS100
110	55	55	CS110
120	60	60	CS120
130	65	65	CS130

Privacy Cylinder			
Dimension(mm)			Art No.
A	B	C	
50	25	25	CSB50
60	30	30	CSB60
65	32.5	32.5	CSB65
70	36	36	CSB70
76	38	38	CSB76
80	40	40	CSB80
90	45	45	CSB90
100	50	50	CSB100
110	55	55	CSB110
120	60	60	CSB120
130	65	65	CSB130

HALF CYLINDER			
Dimension(mm) 尺寸			Art No.
A	B	C	
40	30	10	CH40
45	35	10	CH45
50	40	10	CH50
51	40	11	CH51
55	45	10	CH55
60	50	10	CH60

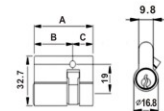
THUMB TURN HALF CYLINDER Fit Exit Door Lock, Bathroom Door Lock			
Dimension(mm) 尺寸			Art No.
A	B	C	
40	30	10	CHB40
45	35	10	CHB45
50	40	10	CHB50
51	40	11	CHB51
55	45	10	CHB55
60	50	10	CHB60



HALF CYLINDER



THUMB TURN HALF CYLINDER



LOCK BODY SERIES



LC01

Backset Size	20X85mm
	25X85mm
	30X85mm
	35X85mm
	40X85mm
	45X85mm
	50X85mm
	60X85mm



LC02



LC03



LC04



LC05



LC06



LC07

LOCK BODY SERIES

Backset Size
50X72mm
55X72mm
60X72mm

OKAYLOK®



LC08



LC09



LC10



LC11



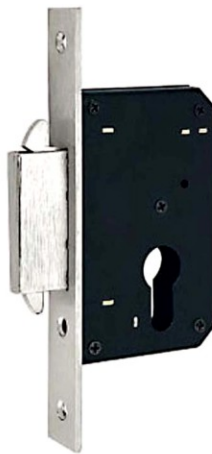
LC12



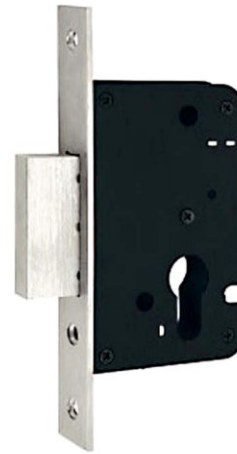
LC13



LC14



LC15



LC16

OKAYLOK[®]

MORTISE LOCK



STAINLESS STEEL TUBE LEVER HANDLE



TH001



TH002



TH003



TH004



TH005



TH006



TH007



TH008



TH009



TH010



TH011



THS001



THS002

STAINLESS STEEL LOCK

How to order
330A-01
→ Handle Code
→ Panel Code



330A-01



330C-05



330G-07



300C-18



300A-06



300F-06



330C-31

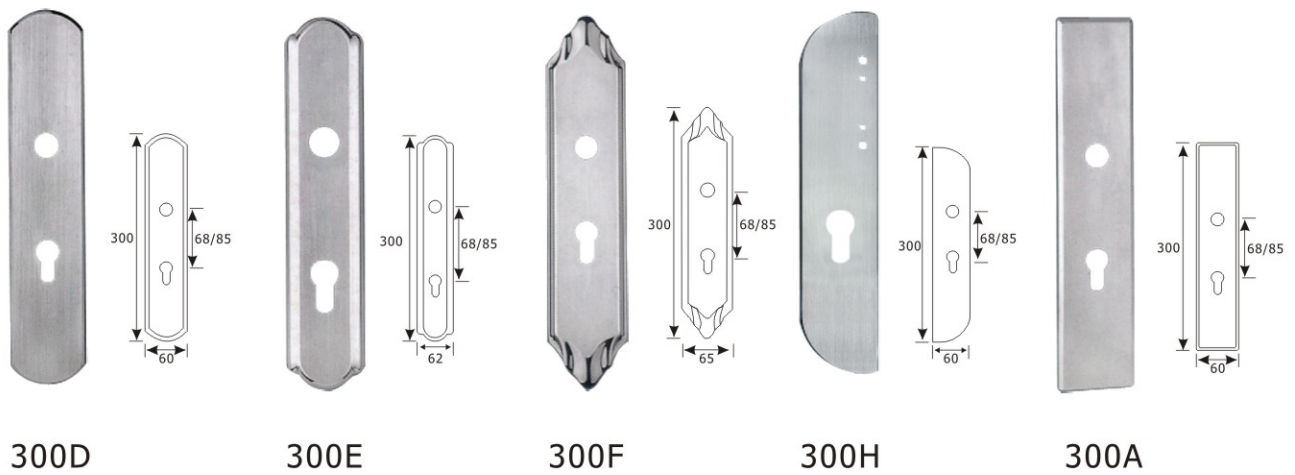
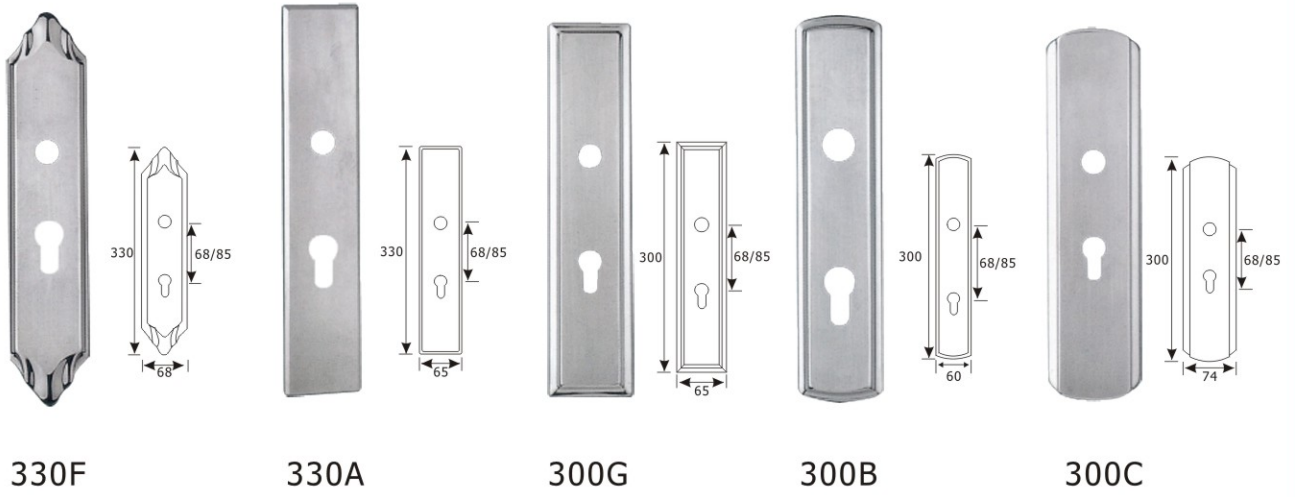
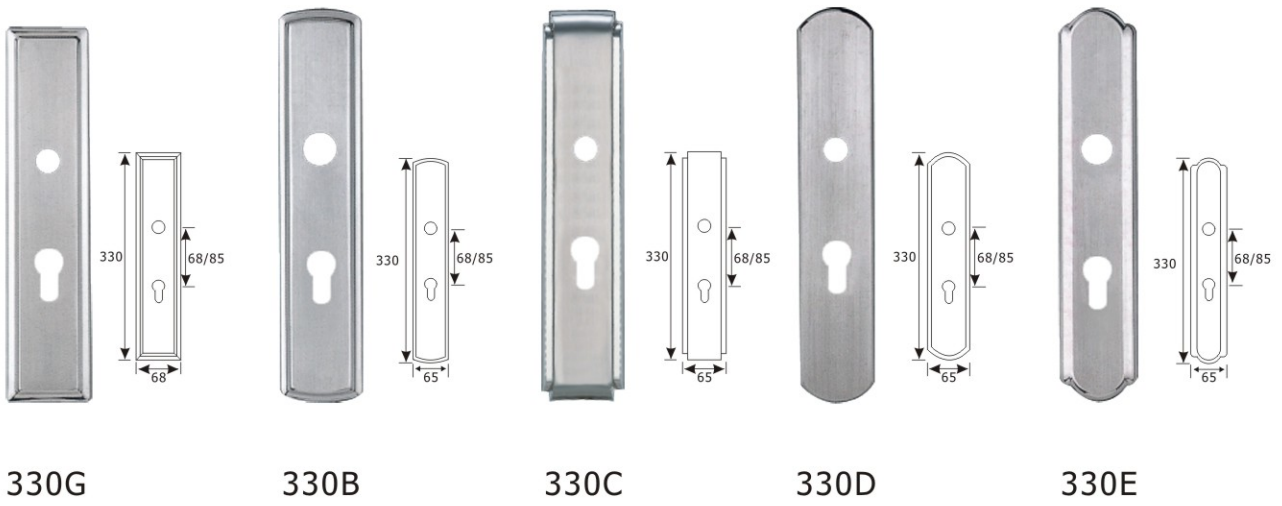


300D-03

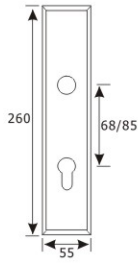


330E-30

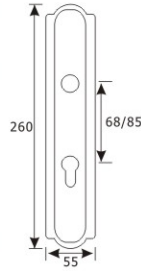
STAINLESS STEEL PANEL SERIES



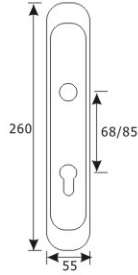
STAINLESS STEEL PANEL SERIES



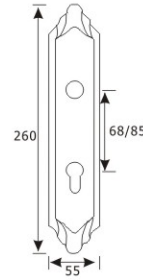
260A



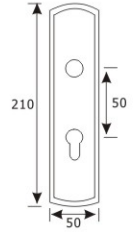
260E



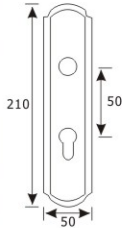
260H



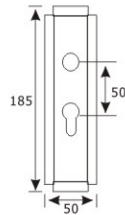
260F



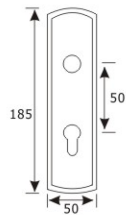
210B



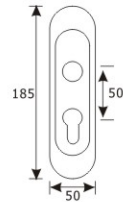
210E



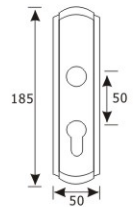
185C



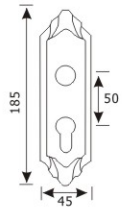
185B



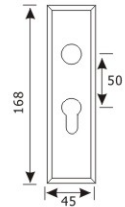
185H



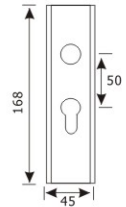
185E



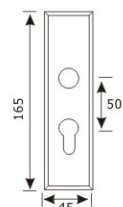
185F



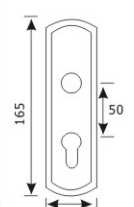
168A



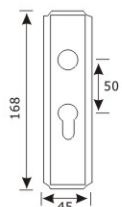
168K



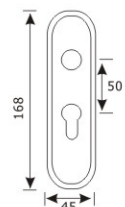
165G



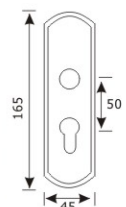
165B



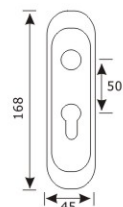
168M



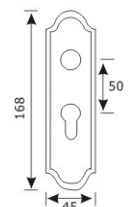
168L



165D

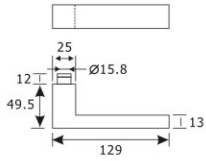


168H

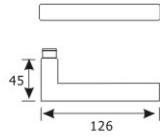


168N

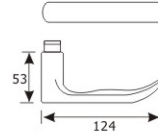
STAINLESS STEEL HANDLE SERIES



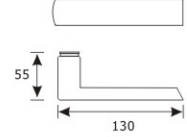
01



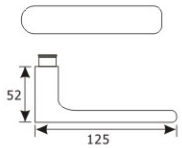
02



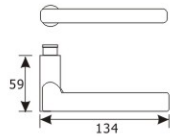
03



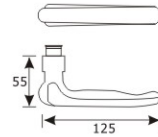
04



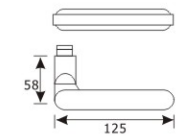
05



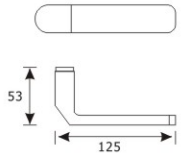
06



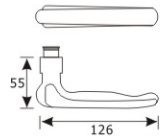
07



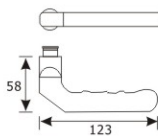
08



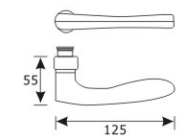
09



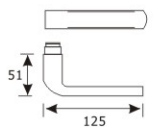
10



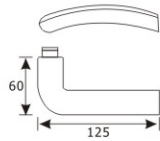
11



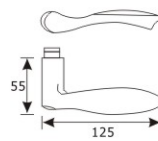
12



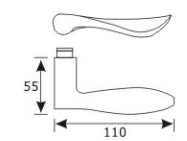
13



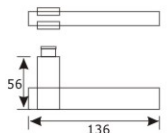
14



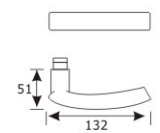
15



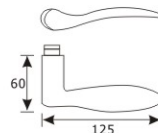
16



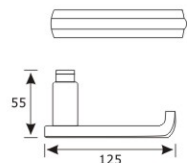
17



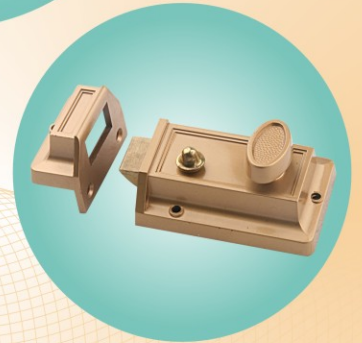
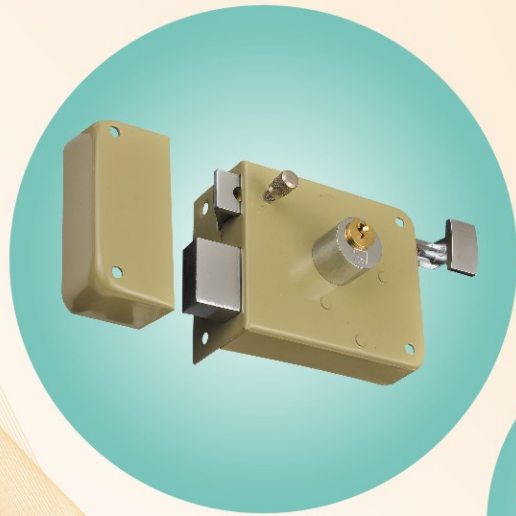
18



19



20



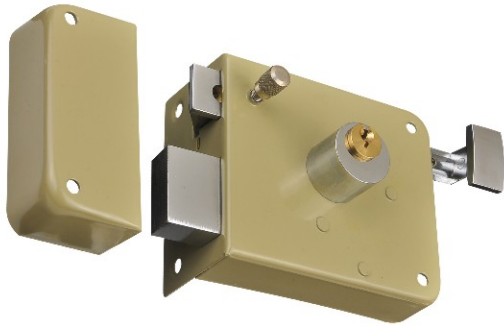
OKAYLOK[®]

RIM NIGHT LOCK SERIES

RIM NIGHT LOCK SERIES

Standard Features:

- Fits doors 1-3/8"(35mm)to 1-3/4"(50mm)thick
- Backset:2-3/8"(60mm)
- Furnished with angle strike
- Double cylinder features cylinders,both inside and outside for extra protection on glass pane door
- Securely bolts door to jamb
- Surface installation requires one 1-1/4" diamater hole
- Double cylinder has two bolts omterlock with strike



715



806



602



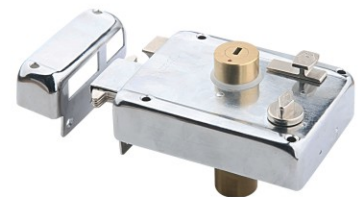
300 AB



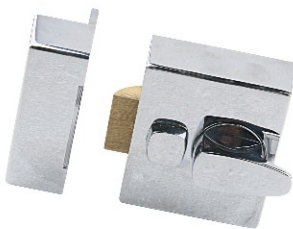
566



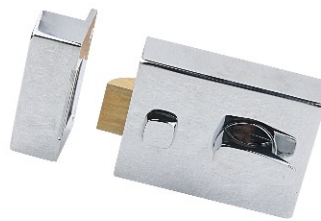
588 GL



311 CP



561 CP



562 CP



562 BN



B011

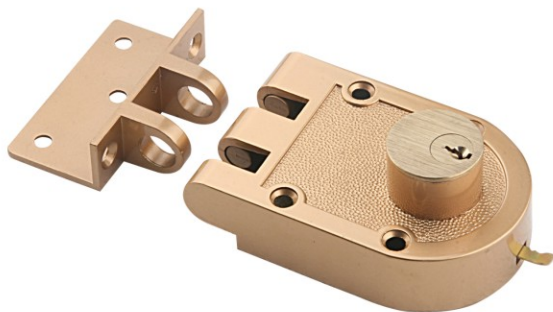


B012



B013

**RIM NIGHT
LOCK SERIES**



J002 GP

Standard Features:

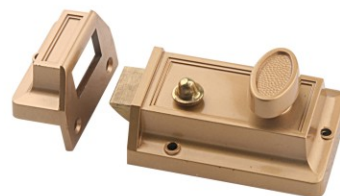
- Fits doors 1-3/8"(35mm)to 1-3/4"(50mm) thick
- Backset:2-3/8"(60mm)
- Furnished with angle strike
- Double cylinder features cylinders, both inside and outside for extra protection on glass pane door
- Securely bolts door to jamb
- Surface installation requires one 1-1/4" diameter hole
- Double cylinder has two bolts omterlock with strike



J001 GP



564S GP



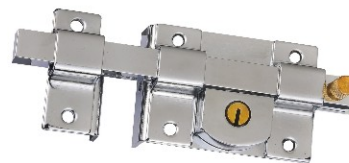
564 GP



J101 GREY



J301 GREY



701



J102 GREY

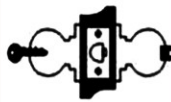



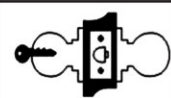

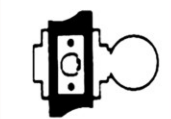
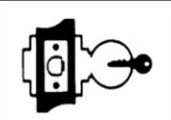



J302 GREY



702

LOCKS FUNCTIONS

CODE	FUNCTION	ABBREVIATION	DIAGRAM	DIRECTIONS
1	Entrance	ET		<ul style="list-style-type: none"> ● Unlocked by key from outside when button locking ● Unlocked by knob/lever from either side when button unlocked ● Inside knob/lever always unlocked ● Outside knob can be locked by the side push(turn) button.
2	Privacy (Bed & Bath)	BK		<ul style="list-style-type: none"> ● Unlock door from outside when turning emergency slot. ● Inside knob always active.
3	Passage (Hall & Closet)	PS		<ul style="list-style-type: none"> ● Both knobs/lever always free to operate latch bolt.
4	Storeroom	SR		<ul style="list-style-type: none"> ● Deadlocking latch bolt. ● Only the inside knob and outside key can operate latch bolt ● Outside knob always rigid, Inside knob always free providing emergency exit.
5	Classroom	CR		<ul style="list-style-type: none"> ● Latch operated by knob/lever from either side except when outside knob/lever is locked by key from outside. ● Inside knob/lever always free providing emergency exit.
6	Communicating Lock	CM		<ul style="list-style-type: none"> ● Intended for communicating doors requiring deadlocking latch bolt. ● Key in either knob locks and unlocks each knob independently.
7	Exit Latch	EL		<ul style="list-style-type: none"> ● For twin communicating or exit doors where one-side operation is required ● Also when space is limited between door and switch panel. ● Deadlocking latch bolt. ● One knob operation. ● Blank rose Should be used only where rooms have more than one entrance.
8	Communicating Lock	CC		<ul style="list-style-type: none"> ● For doors 1-3/8" to 1-3/4" (35-45mm) only. ● Deadlocking latch bolt. ● Latch bolt operated by key or rotating knob. ● Fully turn of key locks or unlocks
0	Dummy	DM		<ul style="list-style-type: none"> ● Dummy trim for one side of door pull function

FINISH AVAILABLE

Code	Chinese Code	Description	BHMA Code	ANSI Code	Code	Chinese Code	Description	BHMA Code	ANSI Code
AB	青古铜	Antique Brass	609	US5	AN	古镍	Antique Nickel	620	US15A
AC	红古铜	Antique Copper	616	US11	ORB	棕古铜	Oil Rubbed Bronze	613	US10B
PB	仿金	Polished Brass	605	US3	TB	TB	Tuscan Bronze (ORB with Highlight)	N/A	US11P
SB	砂金	Satin Brass	606	US4	PVD	PVD	Life Time Polished Brass	L03	US505
SS	不锈钢砂光	Satin Stainless Steel	630	US32D	BN	黑镍	Black Nickel		US17A
SP	不锈钢抛光	Polished Stainless Steel	629	US32	PC	珍珠铬	Pearl Chrome		
CP	光铬	Bright Chrome	625	US26	NP	光镍	Bright Nickel		
SN	砂镍	Satin Nickel	619	US15	WZP	镀白锌	White Galvanized		
SC	砂铬	Satin Chrome	626	US26D	YZP	镀彩锌	Yellow Galvanized		

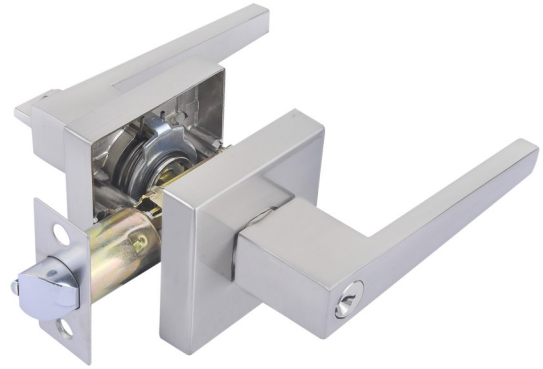
**HEAVY DUTY TUBULAR
LEVER LOCK**

Specifications:

- Meet ANSI Grade 3 for over 200,000 life cycles
- Exposed Trim: Lever and Rosette are made of die-cast zinc alloy.
- Key: 5-Pins Kwikset/ Yale/ Schlage or computer keyways selectable.
- Latch 45°, Adjustable backset 60mm (2-3 / 8") or 70mm (2-3 / 4")
- Door Thickness: Fit doors from 35mm (1-3 / 8") to 50mm (2")
- Handing: Reversible lever for Right & Left Handed door
- Pack: Color Box or blister packing available



6272 SN



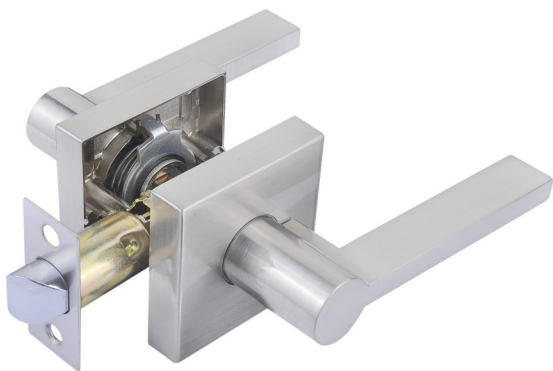
6273 SN



6232 SN



6233 SN



6213 SN

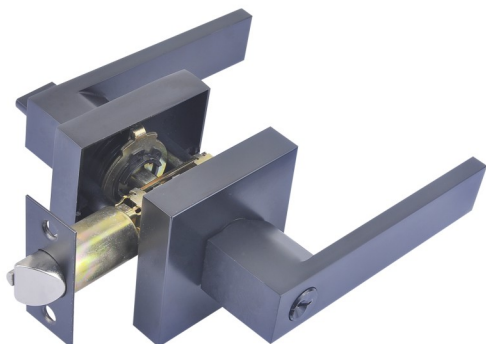


6223 SN

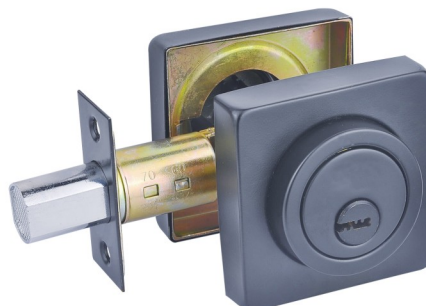
TUBULAR LEVER LOCK

Specifications:

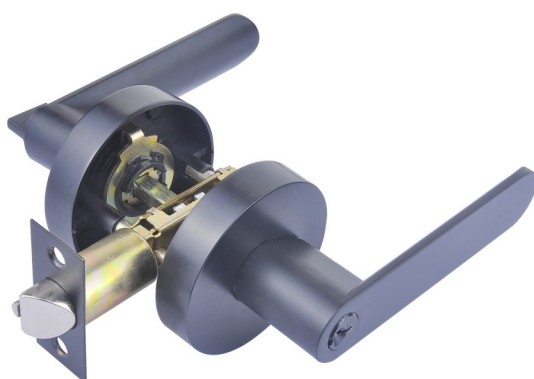
- Exposed Trim: Zinc alloy Lever, Rosette are made of zinc alloy or stainless steel or steel, could be plated to match finishes indicated.
- Key: 5-Pins Kwikset/Yale/Schlage or computer keyways selectable.
- Cylinder: High class brass cylinder. (Solid brass 5 pins cylinder is available)
- Door Thickness: 1-3/8" to 1-3/4" (35mm to 45mm) standard.
- Backset: Adjustable 2-3/8" (60mm) or 2-3/4" (70mm) backset.



6271 BN



D502 BN



6211 BN



6491 BN



6371 SN



6381 SN



■ **OKAY LOCK MANUFACTURE CO., LIMITED**

ADD: NO. 40 Qingfeng 6th Road, Xiaolan, Zhongshan,
Guangdong, China.

Tel: 86-760-22256670

Fax: 86-760-22256840

E-mail: okaylock@hotmail.com
okaylock8@hotmail.com

Website: www.okaylock.com